



# HubnHome



## List of all Models

Royal40E | Tudor40PF | Villa40 | Manor40P | Castle40F  
Chalet30 | Cottage30F | Lodge25E | Cabin25 | Abode25M

# PRODUCT CATALOGUE



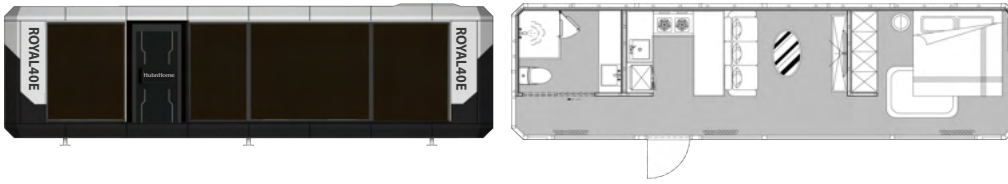
# ROYAL40E

Controlled investment, big returns





# HubnHome Future Modular Homes



**MODEL**

**ROYAL40E**

**DIMENSIONS :** Length 11500mm × Width 3300mm × Height 3200mm

**AREA :** 37.95㎡ **Users :** 2人 **Power :** 13.5KW

Item	Standard Configuration		options
BASIC CONSTRUCTION	Main Frame System	Seismic steel structure system	★
	Bridge-Cut Door And Window	Inlaid double-layer tempered hollow LOW-E glass	★
	Heat Preservation System	Polyurethane foam 60mm+High density extruded board 60mm	★
	Exterior Wall System	Fluorocarbon paint customized aluminum plate	★
	Glass Curtain Wall System	Double-layer tempered hollow LOW-E glass 6+12A+6	★
	Shed Surface System	Standard color fiberboard+Standard color aluminum plate	★
	Wall System	Marble colored fibreboard interior wall finish+Standard color aluminum plate	★
	Floor System	Base cement fiberboard、Indoor Dekor Floor	★
BATHROOM CONFIGURATION	Toilet	Panasonic/Kohler	★
	Basin	Panasonic/Kohler	★
	Faucet	Panasonic/Kohler	★
	Shower	Panasonic/Kohler	★
APPLIANCES	Electrical Control	Midea/Panasonic/Chint/Schneider and other brands	★
	Hydropower	Reservation of electric related up and down water pipelines and power supply	★
	Bedroom Lighting	upper light strip 4000K	★
	Bedroom Ambient Light	The up light strip, the down light strip, and the middle light strip 3500K	★
	Bathroom Lighting	Hidden downlight (waterproof) above the sink and toilet 4000k	★
	Air Conditioning	air conditioner 1.5P+2P	★
	Smart Lock	Waterproof smart lock	★
	Projector	XGIMI projector	★
	Refrigerator	built-in refrigerator	★
	Water Heater	A-O-SMIT 60L	★
HUBNHOME CUSTOMIZATION	Curtain	Customized curtain inside and outside double color	★
	Integrated Control Panel	Integrated light control panel and other functions	★
	Curtain Motor Track	Metal structure, durable, with nylon pulleys	★
	Front Electric Roller Blinds	Electric control curtain	★
	Top Sunshade	Electric control thickened sunshade	★
	Bar Counter	Customized bar with sink	★
	Integrated Stove	Integrates with range hood	★

Note: In the continuous upgrading and iteration of the product, the pictures are for reference only, the final appearance is subject to the delivered product, and the product configuration brand will arrange products of the same level according to the actual situation.



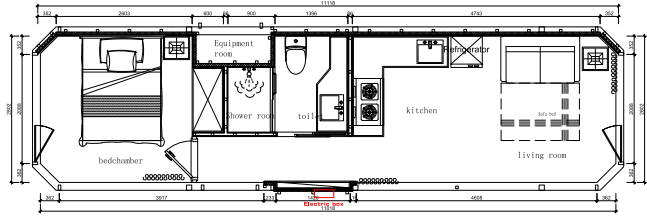
**TUDOR40PF**

Your family home away from home





# HubnHome Future Modular Homes



**MODEL**

**TUDOR40PF**

**DIMENSIONS : Length 11500mm × Width 3300mm × Height 3200mm**

**AREA : 37.95m<sup>2</sup> Users : 2-4 Power : 11KW**

Item	Standard Configuration		options
BASIC CONSTRUCTION	Main Frame System	Seismic steel structure system	★
	Bridge-Cut Door And Window	Inlaid double-layer tempered hollow LOW-E glass	★
	Heat Preservation System	Polyurethane foam 60mm+High density extruded board 60mm	★
	Exterior Wall System	Fluorocarbon paint customized aluminum plate	★
	Glass Curtain Wall System	Double-layer tempered hollow LOW-E glass 6+12A+6	★
	Shed Surface System	Standard color fiberboard+Standard color aluminum plate	★
	Wall System	Marble colored fibreboard interior wall finish+Standard color aluminum plate	★
	Floor System	Base cement fiberboard, Indoor Dekor Floor	★
BATHROOM CONFIGURATION	Toilet	Panasonic/Kohler	★
	Basin	Panasonic/Kohler	★
	Faucet	Panasonic/Kohler	★
	Shower	Panasonic/Kohler	★
APPLIANCES	Electrical Control	Midea/Panasonic/Chint/Schneider and other brands	★
	Hydropower	Reservation of electric related up and down water pipelines and power supply	★
	Bedroom Lighting	upper light strip 4000K	★
	Bedroom Ambient Light	The up light strip, the down light strip, and the middle light strip 3500K	★
	Bathroom Lighting	Hidden downlight (waterproof) above the sink and toilet 4000k	★
	Air Conditioning	air conditioner 1.5P+2P	★
	Smart Lock	Waterproof smart lock	★
	Projector	XGIMI projector	★
HUBNHOME CUSTOMIZATION	Water Heater	A-O-SMIT 60L	★
	Curtain	Customized curtain inside and outside double color	★
	Integrated Control Panel	Integrated light control panel and other functions	★
	Curtain Motor Track	Metal structure, durable, with nylon pulleys	★
	Front Electric Roller Blinds	Electric control curtain	★
	Top Sunshade	Electric control thickened sunshade	★

Note: In the continuous upgrading and iteration of the product, the pictures are for reference only, the final appearance is subject to the delivered product, and the product configuration brand will arrange products of the same level according to the actual situation.



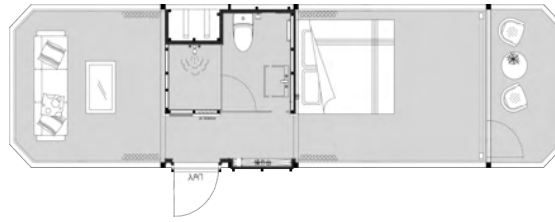
# VILLA40

Environmentally friendly





# HubnHome Future Modular Homes



**MODEL**

**VILLA40**

**DIMENSIONS :** Length 11500mm × Width 3300mm × Height 3200mm

**AREA :** 37.95m<sup>2</sup>    **Users :** 2-4    **Power :** 11KW

Item	Standard Configuration		options
BASIC CONSTRUCTION	Main Frame System	Seismic steel structure system	★
	Bridge-Cut Door And Window	Inlaid double-layer tempered hollow LOW-E glass	★
	Heat Preservation System	Polyurethane foam 60mm+High density extruded board 60mm	★
	Exterior Wall System	Fluorocarbon paint customized aluminum plate	★
	Glass Curtain Wall System	Double-layer tempered hollow LOW-E glass 6+12A+6	★
	Shed Surface System	Standard color fiberboard+Standard color aluminum plate	★
	Wall System	Marble colored fibreboard interior wall finish+Standard color aluminum plate	★
	Floor System	Base cement fiberboard、Indoor Dekor Floor	★
	Outdoor Balcony	Laminated glass guardrail, outdoor 23mm floor	★
BATHROOM CONFIGURATION	Toilet	Panasonic/Kohler	★
	Basin	Panasonic/Kohler	★
	Faucet	Panasonic/Kohler	★
	Shower	Panasonic/Kohler	★
APPLIANCES	Electrical Control	Midea/Panasonic/Chint/Schneider and other brands	★
	Hydropower	Reservation of electric related up and down water pipelines and power supply	★
	Bedroom Lighting	upper light strip 4000K	★
	Bedroom Ambient Light	The up light strip, the down light strip, and the middle light strip 3500K	★
	Bathroom Lighting	Hidden downlight (waterproof) above the sink and toilet 4000k	★
	Terrace Lighting	Lighting downlight (waterproof) 4000k	★
	Terrace Wall Light	Outdoor terrace yellow marker lights 3000k	★
	Air Conditioning	air conditioner 1.5P+2P	★
	Smart Lock	Waterproof smart lock	★
	Projector	XGIMI projector	★
	Water Heater	A-O-SMIT 60L	★
HUBNHOME CUSTOMIZATION	Curtain	Customized curtain inside and outside double color	★
	Integrated Control Panel	Integrated light control panel and other functions	★
	Curtain Motor Track	Metal structure, durable, with nylon pulleys	★
	Front Electric Roller Blinds	Electric control curtain	★
	Top Sunshade	Electric control thickened sunshade	★

Note: In the continuous upgrading and iteration of the product, the pictures are for reference only, the final appearance is subject to the delivered product, and the product configuration brand will arrange products of the same level according to the actual situation.



# MANOR40P

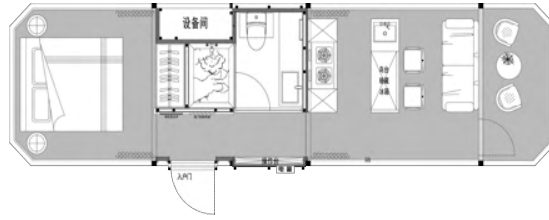
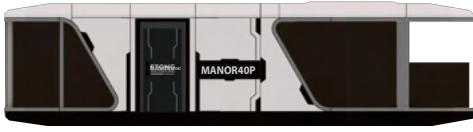
Fully furnished, ready to move in







# HubnHome Future Modular Homes



**MODEL**

**MANOR40P**

**DIMENSIONS** : Length 11500mm × Width 3300mm × Height 3200mm

**AREA** : 37.95㎡ **Users** : 2人 **Power** : 13.5KW

Item	Standard Configuration		options
BASIC CONSTRUCTION	Main Frame System	Seismic steel structure system	★
	Bridge-Cut Door And Window	Inlaid double-layer tempered hollow LOW-E glass	★
	Heat Preservation System	Polyurethane foam 60mm+High density extruded board 60mm	★
	Exterior Wall System	Fluorocarbon paint customized aluminum plate	★
	Glass Curtain Wall System	Double-layer tempered hollow LOW-E glass 6+12A+6	★
	Shed Surface System	Standard color fiberboard+Standard color aluminum plate	★
	Wall System	Marble colored fibreboard interior wall finish+Standard color aluminum plate	★
	Floor System	Base cement fiberboard、Indoor Dekor Floor	★
Outdoor Balcony	Laminated glass guardrail, outdoor 23mm floor	★	
BATHROOM CONFIGURATION	Toilet	Panasonic/Kohler	★
	Basin	Panasonic/Kohler	★
	Faucet	Panasonic/Kohler	★
	Shower	Panasonic/Kohler	★
APPLIANCES	Electrical Control	Midea/Panasonic/Chint/Schneider and other brands	★
	Hydropower	Reservation of electric related up and down water pipelines and power supply	★
	Bedroom Lighting	upper light strip 4000K	★
	Bedroom Ambient Light	The up light strip, the down light strip, and the middle light strip 3500K	★
	Bathroom Lighting	Hidden downlight (waterproof) above the sink and toilet 4000k	★
	Terrace Lighting	Lighting downlight (waterproof) 4000k	★
	Terrace Wall Light	Outdoor terrace yellow marker lights 3000k	★
	Air Conditioning	air conditioner 1.5P+2P	★
	Smart Lock	Waterproof smart lock	★
	Refrigerator	built-in refrigerator	★
	Water Heater	A-O-SMIT 60L	★
HUBNHOMES CUSTOMIZATION	Curtain	Customized curtain inside and outside double color	★
	Integrated Control Panel	Integrated light control panel and other functions	★
	Curtain Motor Track	Metal structure, durable, with nylon pulleys	★
	Top Sunshade	Electric control thickened sunshade	★
	Bar Counter	Customized bar with sink	★
	Integrated Stove	Integrates with range hood	★

Note: In the continuous upgrading and iteration of the product, the pictures are for reference only, the final appearance is subject to the delivered product, and the product configuration brand will arrange products of the same level according to the actual situation.



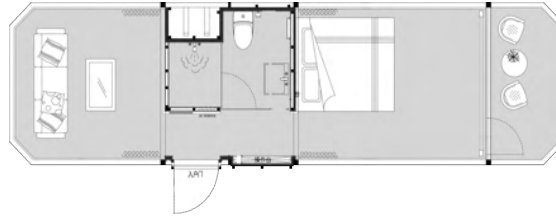
Movable, convenient, and quick installation

# CASTLE40F





# HubnHome Future Modular Homes



**MODEL**

**CASTLE40F**

**DIMENSIONS : Length 11500mm × Width 3300mm × Height 3200mm**

**AREA : 37.95㎡ Users : 2-4 Power : 11KW**

Item	Standard Configuration		options
BASIC CONSTRUCTION	Main Frame System	Seismic steel structure system	★
	Bridge-Cut Door And Window	Inlaid double-layer tempered hollow LOW-E glass	★
	Heat Preservation System	Polyurethane foam 60mm+High density extruded board 60mm	★
	Exterior Wall System	Fluorocarbon paint customized aluminum plate	★
	Glass Curtain Wall System	Double-layer tempered hollow LOW-E glass 6+12A+6	★
	Shed Surface System	Standard color fiberboard+Standard color aluminum plate	★
	Wall System	Marble colored fibreboard interior wall finish+Standard color aluminum plate	★
	Floor System	Base cement fiberboard、Indoor Dekor Floor	★
BATHROOM CONFIGURATION	Toilet	Panasonic/Kohler	★
	Basin	Panasonic/Kohler	★
	Faucet	Panasonic/Kohler	★
	Shower	Panasonic/Kohler	★
APPLIANCES	Electrical Control	Midea/Panasonic/Chint/Schneider and other brands	★
	Hydropower	Reservation of electric related up and down water pipelines and power supply	★
	Bedroom Lighting	upper light strip 4000K	★
	Bedroom Ambient Light	The up light strip, the down light strip, and the middle light strip 3500K	★
	Bathroom Lighting	Hidden downlight (waterproof) above the sink and toilet 4000k	★
	Air Conditioning	air conditioner 1.5P+2P	★
	Smart Lock	Waterproof smart lock	★
	Projector	XGIMI projector	★
HUBNHOME CUSTOMIZATION	Water Heater	A-O-SMIT 60L	★
	Curtain	Customized curtain inside and outside double color	★
	Integrated Control Panel	Integrated light control panel and other functions	★
	Curtain Motor Track	Metal structure, durable, with nylon pulleys	★
	Front Electric Roller Blinds	Electric control curtain	★
	Top Sunshade	Electric control thickened sunshade	★

Note: In the continuous upgrading and iteration of the product, the pictures are for reference only, the final appearance is subject to the delivered product, and the product configuration brand will arrange products of the same level according to the actual situation.



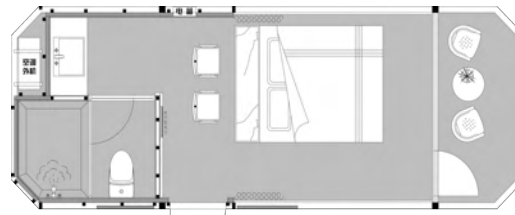
View Magnificent Scenery

**CHALET30**





# HubnHome Future Modular Homes



## MODEL CHALET30

**DIMENSIONS :** Length 8500mm × Width 3300mm × Height 3200mm  
**AREA :** 28.05㎡ **Users :** 2 **Power :** 7.8KW

Item	Standard Configuration		options
BASIC CONSTRUCTION	Main Frame System	Seismic steel structure system	★
	Bridge-Cut Door And Window	Inlaid double-layer tempered hollow LOW-E glass	★
	Heat Preservation System	Polyurethane foam 60mm+High density extruded board 60mm	★
	Exterior Wall System	Fluorocarbon paint customized aluminum plate	★
	Glass Curtain Wall System	Double-layer tempered hollow LOW-E glass 6+12A+6	★
	Shed Surface System	Standard color fiberboard+Standard color aluminum plate	★
	Wall System	Marble colored fibreboard interior wall finish+Standard color aluminum plate	★
	Floor System	Base cement fiberboard, Indoor Dekor Floor	★
	Outdoor Balcony	Laminated glass guardrail, outdoor 23mm floor	★
BATHROOM CONFIGURATION	Toilet	Panasonic/Kohler	★
	Basin	Panasonic/Kohler	★
	Faucet	Panasonic/Kohler	★
	Shower	Panasonic/Kohler	★
APPLIANCES	Electrical Control	Midea/Panasonic/Chint/Schneider and other brands	★
	Hydropower	Reservation of electric related up and down water pipelines and power supply	★
	Bedroom Lighting	upper light strip 4000K	★
	Bedroom Ambient Light	The up light strip, the down light strip, and the middle light strip 3500K	★
	Bathroom Lighting	Hidden downlight (waterproof) above the sink and toilet 4000k	★
	Terrace Lighting	Lighting downlight (waterproof) 4000k	★
	Terrace Wall Light	Outdoor terrace yellow marker lights 3000k	★
	Air Conditioning	air conditioner 2P	★
	Smart Lock	Waterproof smart lock	★
	Projector	XGIMI projector	★
	Water Heater	A-O-SMIT 60L	★
HUBNHOME CUSTOMIZATION	Curtain	Customized curtain inside and outside double color	★
	Integrated Control Panel	Integrated light control panel and other functions	★
	Curtain Motor Track	Metal structure, durable, with nylon pulleys	★
	Front Electric Roller Blinds	Electric control curtain	★
	Top Sunshade	Electric control thickened sunshade	★

Note: In the continuous upgrading and iteration of the product, the pictures are for reference only, the final appearance is subject to the delivered product, and the product configuration brand will arrange products of the same level according to the actual situation.



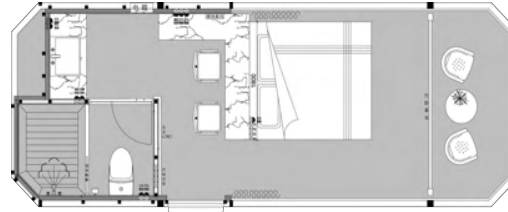
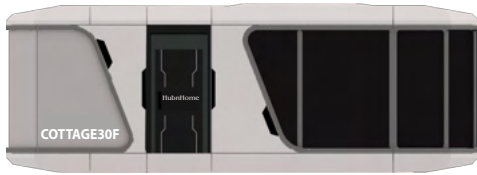
Exquisite decoration & Intelligent Systems

# COTTAGE30F





# HubnHome Future Modular Homes



**MODEL COTTAGE30F**

**DIMENSIONS : Length 8500mm × Width 3300mm × Height 3200mm**

**AREA : 28.05㎡ Users : 2 Power : 7.8KW**

Item	Standard Configuration		options
BASIC CONSTRUCTION	Main Frame System	Seismic steel structure system	★
	Bridge-Cut Door And Window	Inlaid double-layer tempered hollow LOW-E glass	★
	Heat Preservation System	Polyurethane foam 60mm+High density extruded board 60mm	★
	Exterior Wall System	Fluorocarbon paint customized aluminum plate	★
	Glass Curtain Wall System	Double-layer tempered hollow LOW-E glass 6+12A+6	★
	Shed Surface System	Standard color fiberboard+Standard color aluminum plate	★
	Wall System	Marble colored fibreboard interior wall finish+Standard color aluminum plate	★
	Floor System	Base cement fiberboard、Indoor Dekor Floor	★
BATHROOM CONFIGURATION	Toilet	Panasonic/Kohler	★
	Basin	Panasonic/Kohler	★
	Faucet	Panasonic/Kohler	★
	Shower	Panasonic/Kohler	★
APPLIANCES	Electrical Control	Midea/Panasonic/Chint/Schneider and other brands	★
	Hydropower	Reservation of electric related up and down water pipelines and power supply	★
	Bedroom Lighting	upper light strip 4000K	★
	Bedroom Ambient Light	The up light strip, the down light strip, and the middle light strip 3500K	★
	Bathroom Lighting	Hidden downlight (waterproof) above the sink and toilet 4000k	★
	Air Conditioning	air conditioner 2P	★
	Smart Lock	Waterproof smart lock	★
	Projector	XGIMI projector	★
Water Heater	A-O-SMIT 60L	★	
HUBNHOME CUSTOMIZATION	Curtain	Customized curtain inside and outside double color	★
	Integrated Control Panel	Integrated light control panel and other functions	★
	Curtain Motor Track	Metal structure, durable, with nylon pulleys	★
	Front Electric Roller Blinds	Electric control curtain	★
	Top Sunshade	Electric control thickened sunshade	★

Note: In the continuous upgrading and iteration of the product, the pictures are for reference only, the final appearance is subject to the delivered product, and the product configuration brand will arrange products of the same level according to the actual situation.



# LODGE25E & CABIN25

Covenient choice for work or live in



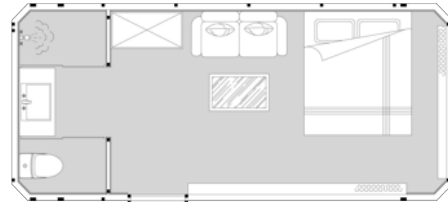
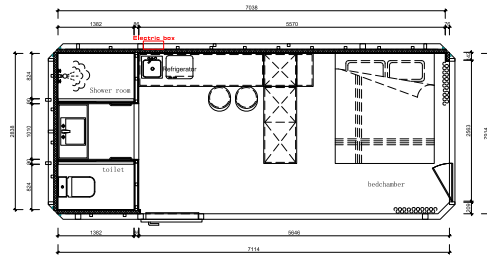
HubnHome







# HubnHome Future Modular Homes



**MODEL**

## LODGE25E & CABIN25

**DIMENSIONS :** Length 7500mm × Width 3300mm × Height 3200mm  
**AREA :** 24.75㎡ **Users :** 2 **Power :** 7.8KW

Item	Standard Configuration		options
BASIC CONSTRUCTION	Main Frame System	Seismic steel structure system	★
	Dridge-Cut Window	Inlaid double-layer tempered hollow LOW-E glass	★
	Heat Preservation System	Polyurethane foam 60mm+High density extruded board 60mm	★
	Exterior Wall System	Fluorocarbon paint customized aluminum plate	★
	Glass Curtain Wall System	Double-layer tempered hollow LOW-E glass 6+12A+6	★
	Shed Surface System	Standard color fiberboard	★
	Wall System	Base layer OSB board+Marble colored fibreboard interior wall finish	★
BATHROOM CONFIGURATION	Floor System	Base cement fiberboard、Indoor Dekor Floor	★
	Toilet	Panasonic/Kohler	★
	Basin	Panasonic/Kohler	★
	Faucet	Panasonic/Kohler	★
APPLIANCES	Shower	Panasonic/Kohler	★
	Electrical Control	Midea/Panasonic/Chint/Schneider and other brands	★
	Hydropower	Reservation of electric related up and down water pipelines and power supply	★
	Bedroom Lighting	upper light strip 4000K	★
	Bedroom Ambient Light	The up light strip, the down light strip, and the middle light strip 3500K	★
	Bathroom Lighting	Hidden downlight (waterproof) above the sink and toilet 4000k	★
	Air Conditioning	air conditioner 1.5P	★
	Smart Lock	Waterproof smart lock	★
HUBNHOME CUSTOMIZATION	Water Heater	A-O-SMIT 60L	★
	Curtain	Customized curtain inside and outside double color	★
	Integrated Control Panel	Integrated light control panel and other functions	★
	Curtain Motor Track	Metal structure, durable, with nylon pulleys	★
	Top Sunshade	Electric control thickened sunshade	★

Note: In the continuous upgrading and iteration of the product, the pictures are for reference only, the final appearance is subject to the delivered product, and the product configuration brand will arrange products of the same level according to the actual situation.



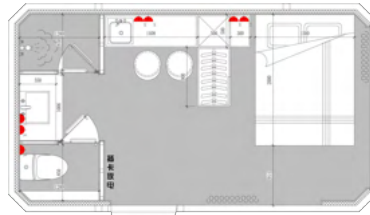
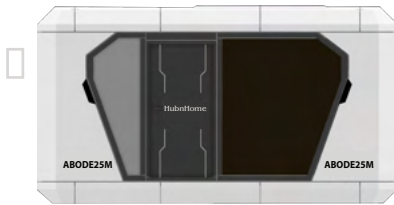
Relocatable work location

# ABODE25M





# HubnHome Future Modular Homes



## MODEL ABODE25M

**DIMENSIONS :** Length 5700mm × Width 3300mm × Height 3200mm  
**AREA :** 18.81㎡ **Users :** 2 **Power :** 8.3KW

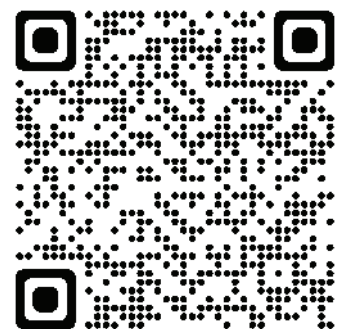
Item	Standard Configuration		options
BASIC CONSTRUCTION	Main Frame System	Seismic steel structure system	★
	Drudge-Cut Window	Inlaid double-layer tempered hollow LOW-E glass	★
	Heat Preservation System	Polyurethane foam 60mm+High density extruded board 60mm	★
	Exterior Wall System	Fluorocarbon paint customized aluminum plate	★
	Glass Curtain Wall System	Double-layer tempered hollow LOW-E glass 6+12A+6	★
	Shed Surface System	Standard color fiberboard	★
	Wall System	Base layer OSB board+Marble colored fibreboard interior wall finish	★
	Floor System	Base cement fiberboard、Indoor Dekor Floor	★
BATHROOM CONFIGURATION	Toilet	Panasonic/Kohler	★
	Basin	Panasonic/Kohler	★
	Faucet	Panasonic/Kohler	★
	Shower	Panasonic/Kohler	★
APPLIANCES	Electrical Control	Midea/Panasonic/Chint/Schneider and other brands	★
	Hydropower	Reservation of electric related up and down water pipelines and power supply	★
	Bedroom Lighting	upper light strip 4000K	★
	Bedroom Ambient Light	The up light strip, the down light strip, and the middle light strip 3500K	★
	Bathroom Lighting	Hidden downlight (waterproof) above the sink and toilet 4000k	★
	Air Conditioning	air conditioner 1.5P	★
	Smart Lock	Waterproof smart lock	★
	Water Heater	A-O-SMIT	★
Refrigerator	Brand refrigerator	★	
HUBNHOME CUSTOMIZATION	Curtain		★
	Integrated Control Panel	Integrated light control panel and other functions	★
	Curtain Motor Track	Metal structure, durable, with nylon pulleys	★
	Kitchen Sink	Panasonic/Kohler	★
	Wardrobe	Customized 500*900 wardrobe	★
	Kitchen Bar	Customized 500*900 wardrobe	★
	Top Sunshade	Electric control thickened sunshade	★

Note: In the continuous upgrading and iteration of the product, the pictures are for reference only, the final appearance is subject to the delivered product, and the product configuration brand will arrange products of the same level according to the actual situation.



**+61 408 032 720**

[enquiries@hubnhome.com.au](mailto:enquiries@hubnhome.com.au)



[www.hubnhome.com.au](http://www.hubnhome.com.au)



**HubnHome**